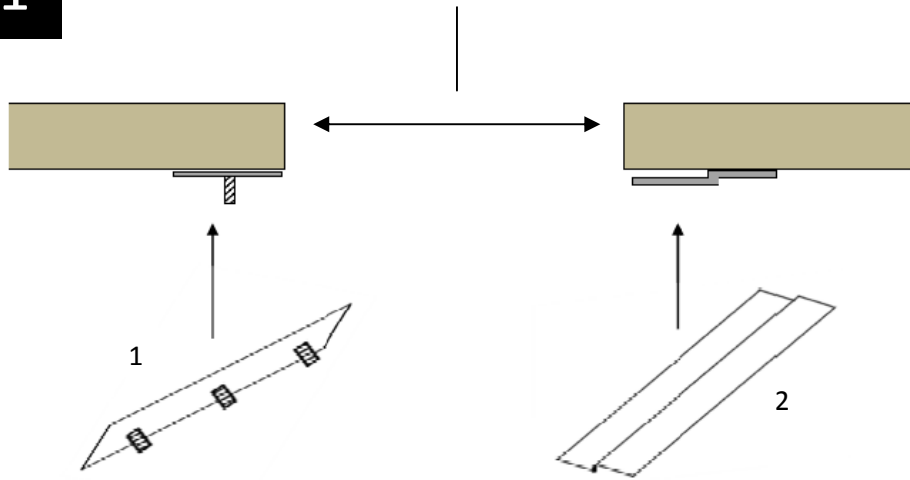
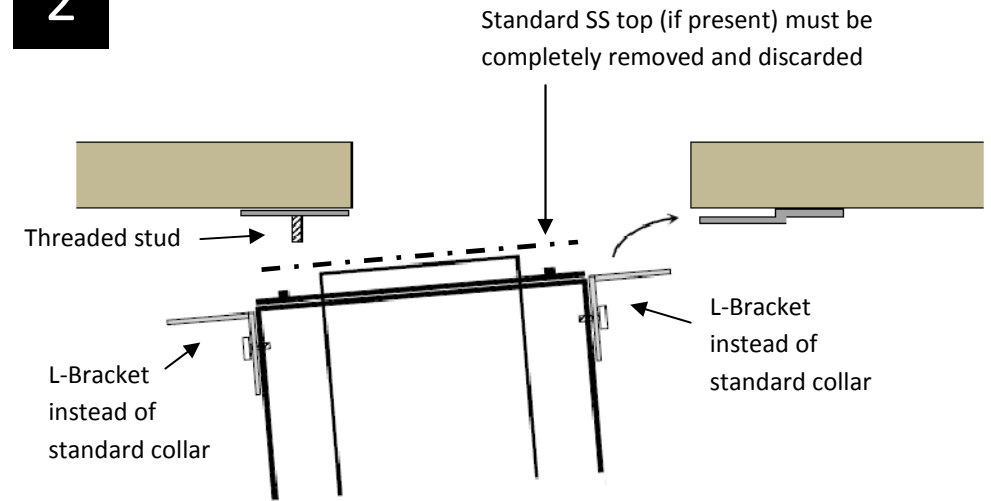


1

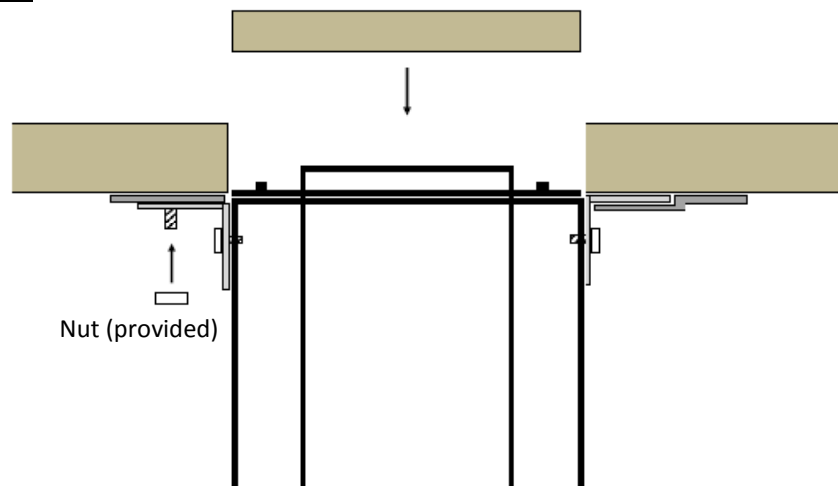
(See master drawing for worktop cut-out dimensions)



Firmly bond mounting bracket elements either side of pre-cut hole (as shown above). Element 2 is a slot, designed for the rear of the unit's location. It duly contains no fixings that would be difficult to reach during or after installation.

2

When bonding to worktop has cured completely, introduce S-Box™ into rear slot and also front L-Bracket to its corresponding studs above.

3

Tighten Nut onto threaded stud and centralise the S-Box™ below its hole. The custom top may now be bonded to the lifting unit.

4

Should final minor adjustment be required to level the top with the work surface, the internal catch 'bite point' can be adjusted to suit.

